
SIMS Standalone Installation Instructions



© 2011 SIMS Software

TABLE OF CONTENTS

REQUIREMENTS.....	3
OVERVIEW.....	3
INSTALLING THE SOFTWARE SECURITY DEVICE (SSD) DRIVER.....	4
INSTALLING SIMS STANDALONE.....	8

Requirements

The following items are required to run SIMS Standalone. These requirements assume SIMS is using its own internal copy of SQL Server 2005 Express Edition.

Type	Minimum	Recommended
CPU	800 Mhz	1 Ghz or faster
Memory	520MB	768MB or above
Hard Disk Space	650MB	1GB
Display	1024x768 resolution, 256 colors	1280x1024, 16-bit color
Operating System	Windows 2000 SP4, Windows XP SP2, Windows Server 2003 SP2, Windows 2008, Windows Vista, Windows 7	Windows Vista, Windows 7

Overview

The SIMS Standalone installer includes an embedded copy of Microsoft SQL Server 2005 Express Edition SP2. Installation requires no user interaction and is the recommend option. The database will be installed under the 'SIMS' instance name to keep it separate from any existing applications that use SQL Server Express.

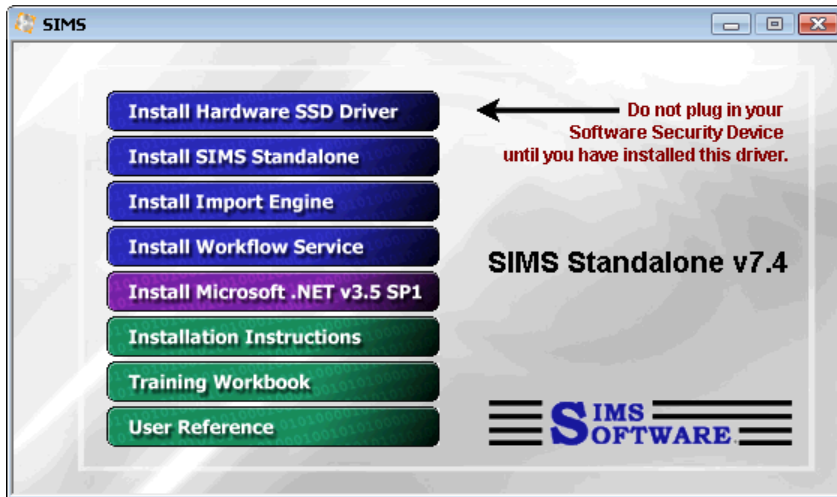
The following operations take place during installation:

- (Optional) SIMS launches an automated installation of Microsoft SQL Server 2005 Express Edition SP2 under the 'SIMS' instance name
- Installer copies files (80MB) to **C:\Program Files\SIMS Software\Standalone**
- (Optional) Installer copies video training files (305MB) to **C:\Program Files\SIMS Software\Standalone\Documentation**
- All **.config** files are updated with local connection information
- A shortcut is created under Start / Program Files / SIMS Software
- A shortcut is created on your desktop

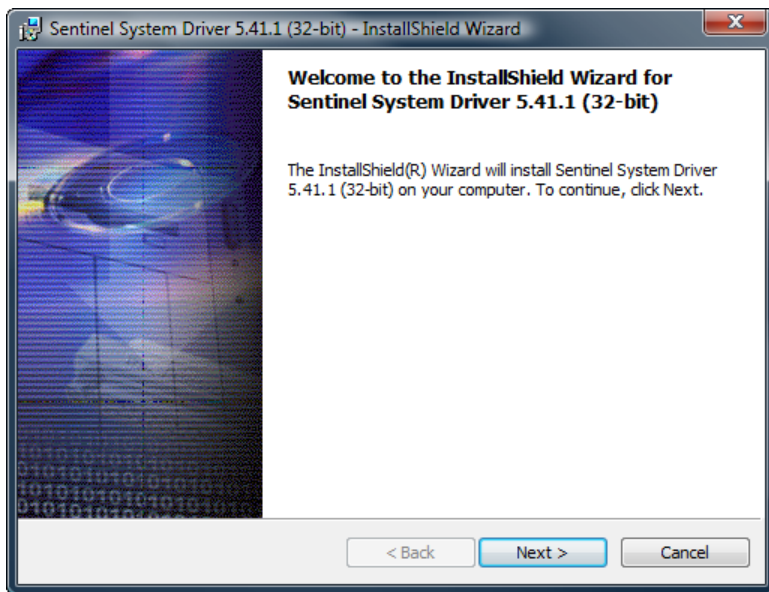
Do not plug in your Software Security Device until you install the driver (first autorun link, below).

Installing the Software Security Device (SSD) Driver

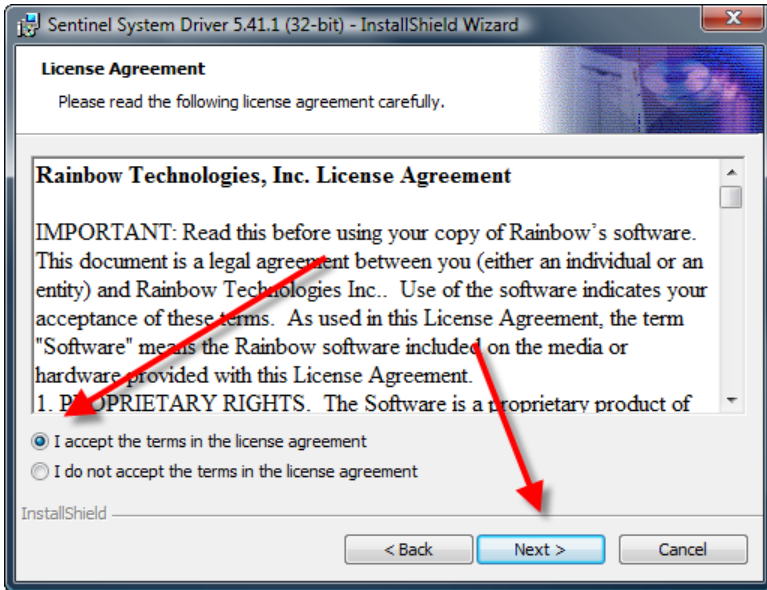
You must install the Software Security Device (SSD) driver before plugging the device into your computer.



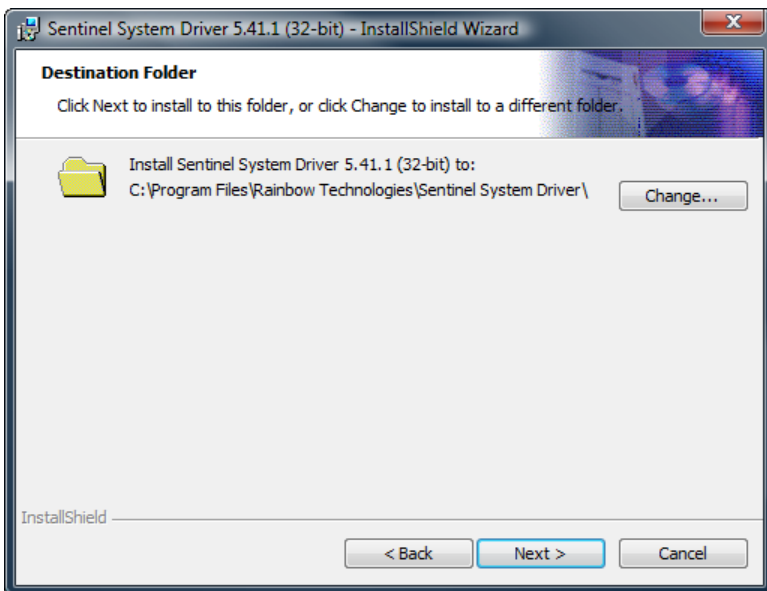
Select **Install Hardware SSD Driver**.



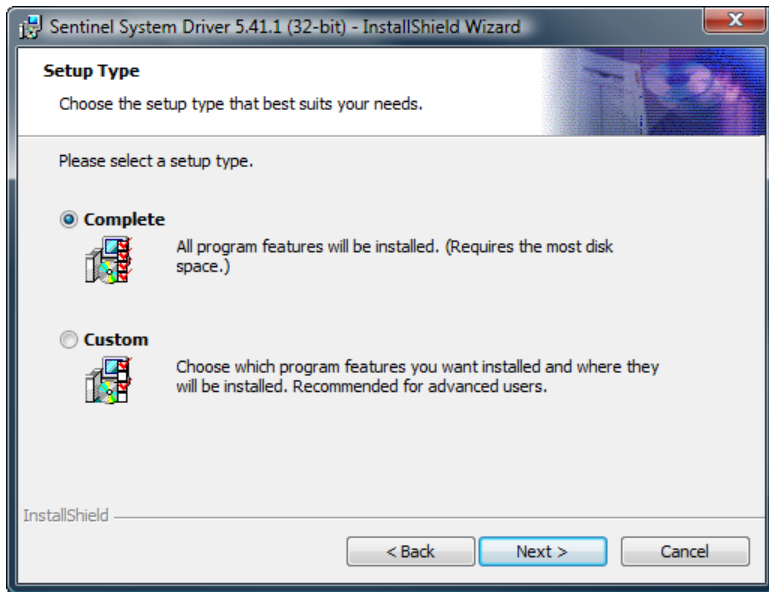
Select **Next**.



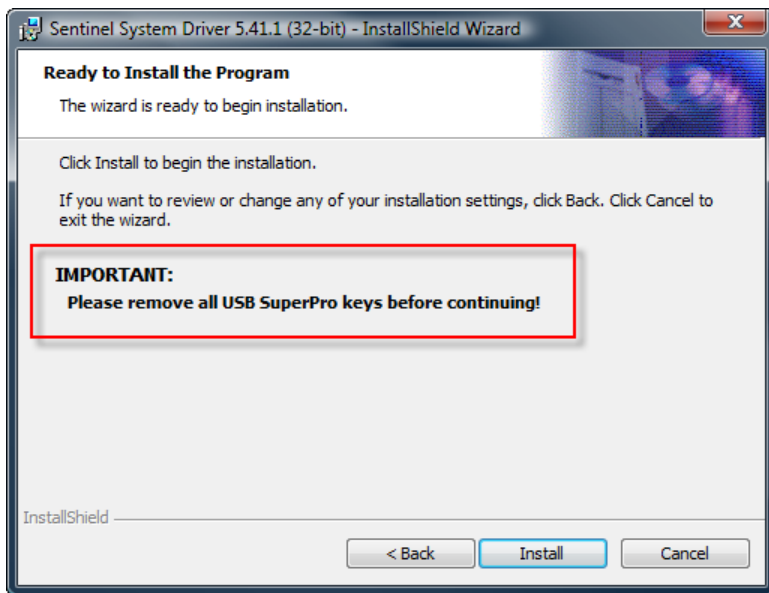
Accept the license agreement and select **Next**.



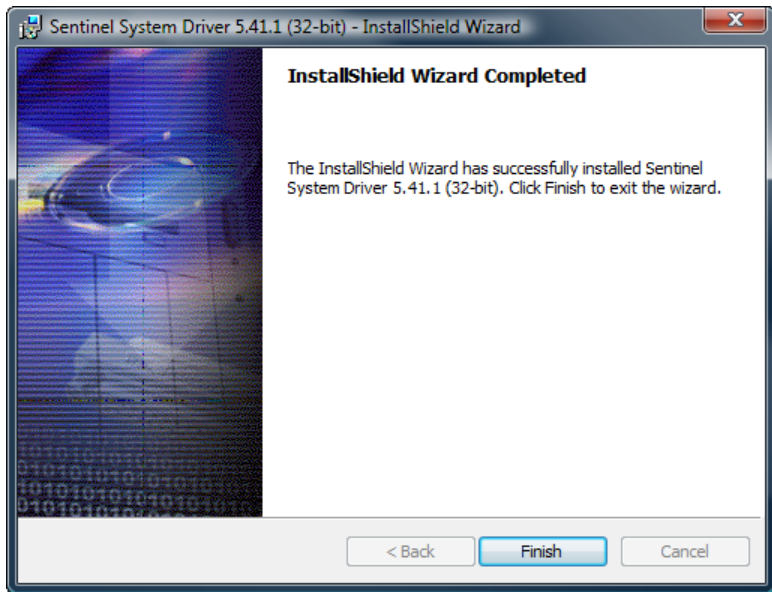
Select **Next**.



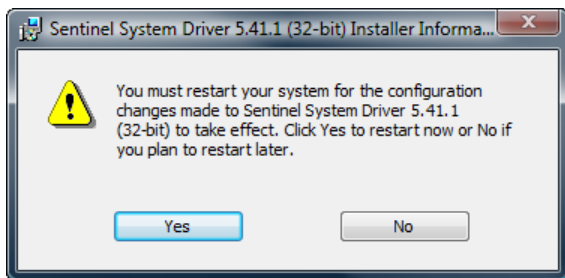
Leave the setting at **Complete** and select **Next**.



Make sure all hardware keys have been removed and select **Next**.



Select **Finish**.



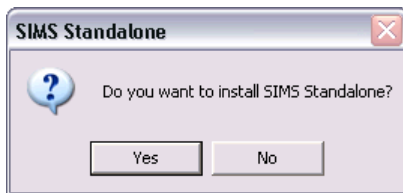
You may be prompted to reboot your machine after installation. Select **Yes** and wait for the machine to reboot before connecting your hardware key.

Installing SIMS Standalone

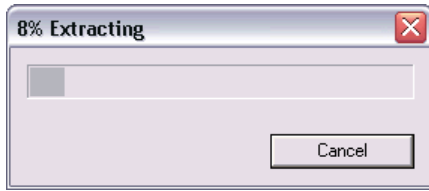
Select the autorun link titled **Install SIMS Standalone**.



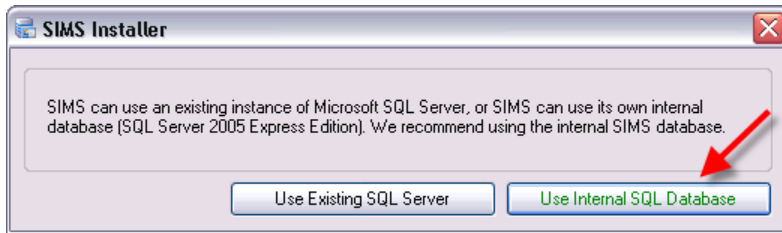
Select **Yes**.



Files will begin extracting. This will take 2-3 minutes.

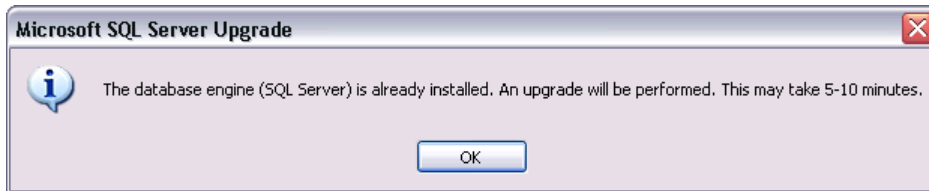


SIMS can install and use its own internal copy of Microsoft SQL Server 2005 Express Edition. This is the recommended option (the green button). Only select **Use Existing SQL Server** if you're an advanced user.

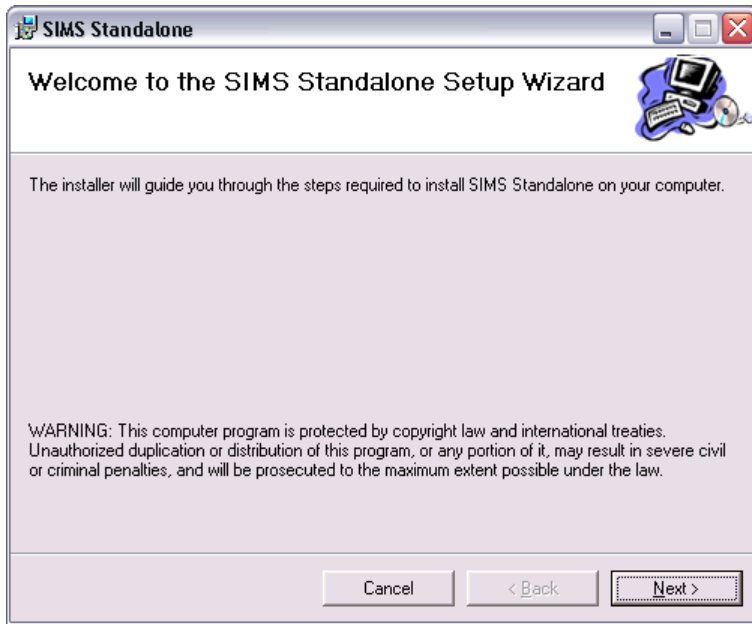


TIP: Hold down the CTRL key while clicking on **Use Internal SQL Database** if you want the SQL Server installation process to display a GUI. Hold down both the CTRL and ALT keys if you want an interactive GUI interface.

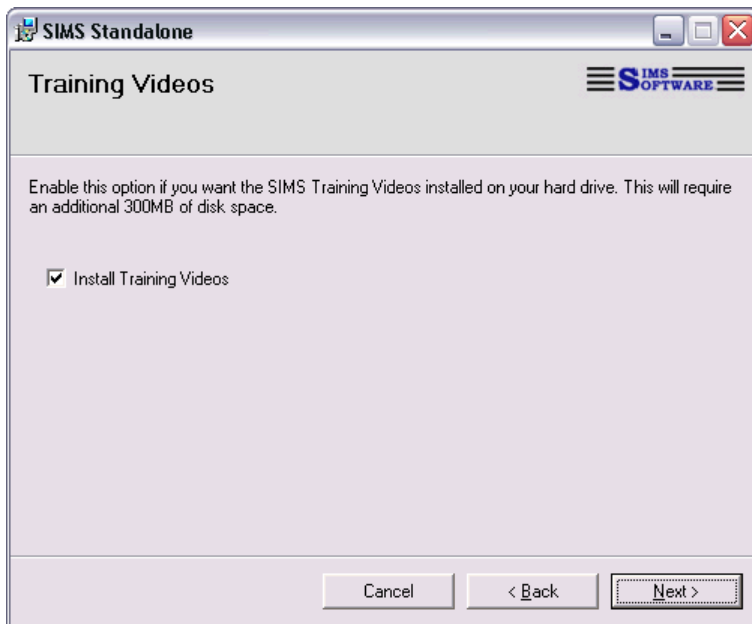
If SQL Server is already installed under the 'SIMS' instance name, an upgrade will be performed to ensure the database is running the correct version.



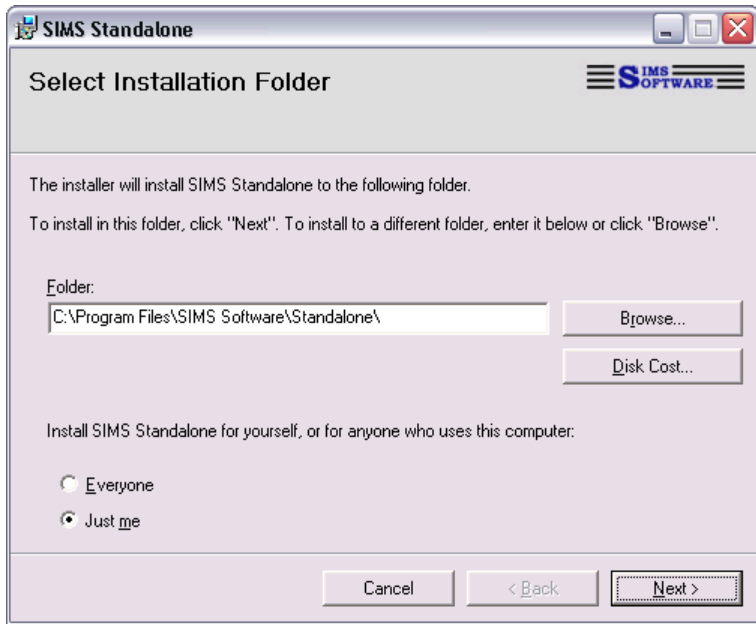
The installation process may take 5-10 minutes. When complete, the SIMS portion of the installation process will begin.



Click **Next**.

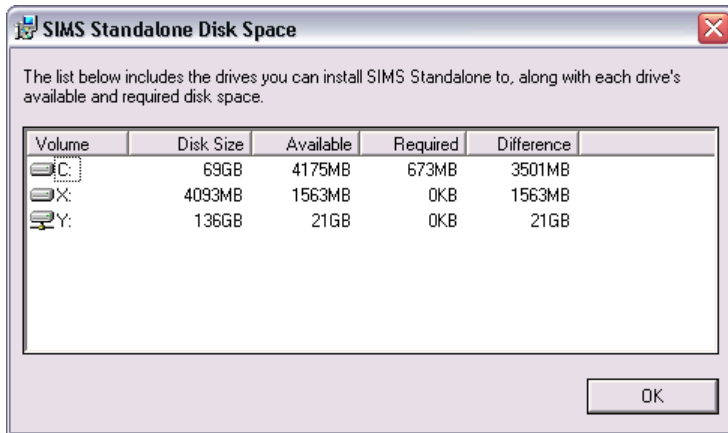


Leave the **Install Training Videos** option checked if you want training videos extracted to your hard drive. Click **Next**.

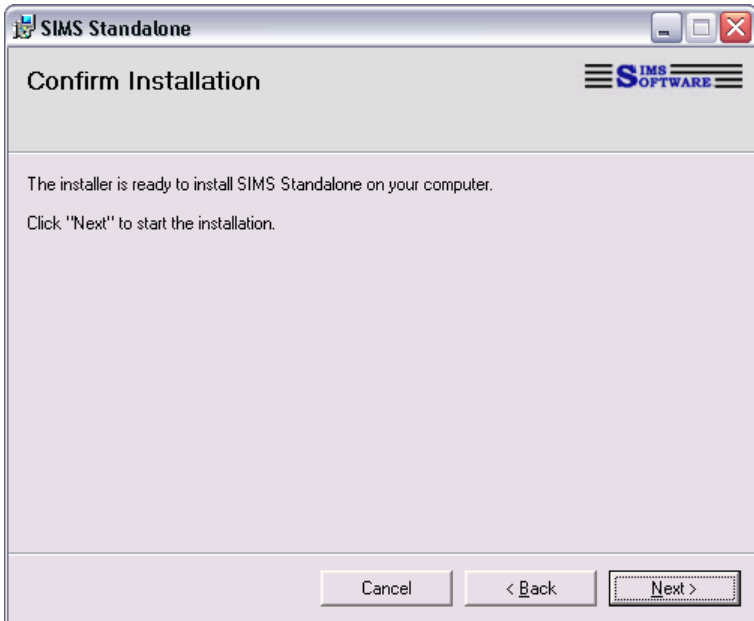


You can select **Disk Cost...** to view how much space will be used during installation. This value includes temporary space required during installation. It is not the final footprint on your hard drive.

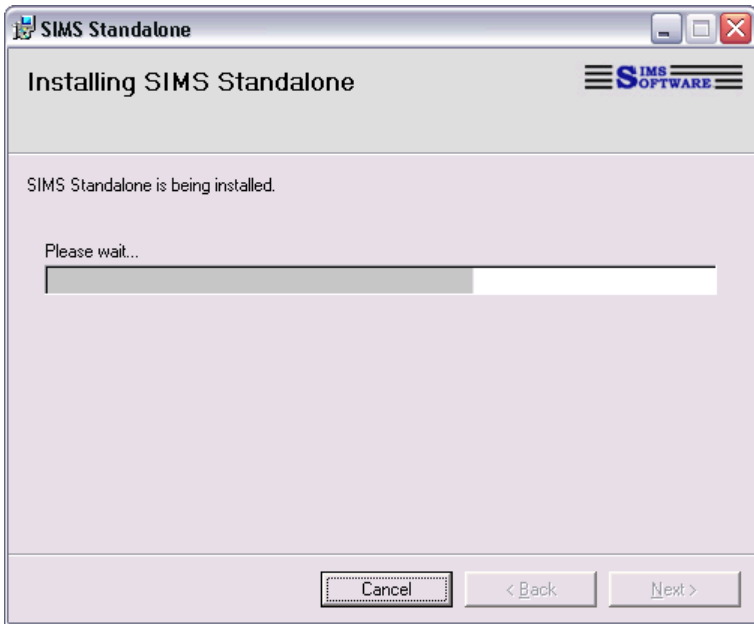
If you change the destination folder to a drive other than C:, the disk cost window may still show space required on C:. This is because of the way the Windows Installer package manages temporary files.



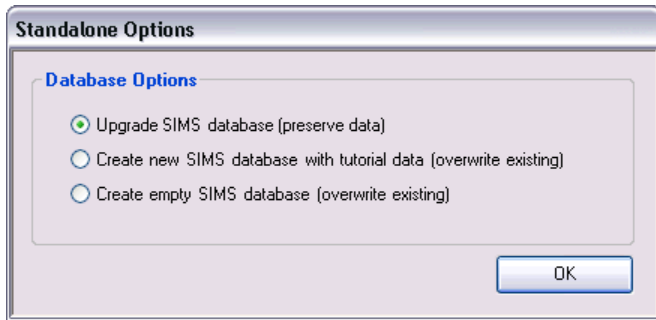
Click **Next** to begin copying files.



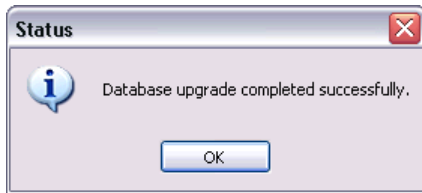
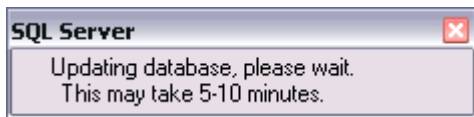
Installation will take approximately 2-3 minutes.



A database option window will appear. Select the first option if SIMS is already installed and you want to preserve your data. Select the second option if this is a demo or tutorial version. Select the third option if you're importing data from SIMS v6.12.1.



If you select upgrade, it may take an additional 5-10 minutes.



TIP: If you receive an error during a database upgrade, please send the following two files with your support request: **sync.sql** and **ApexConsole.txt**. These files will be located under *C:\Program Files\SIMS Software\Standalone\ApexSQL*. The **.sql** file contains the instructions required to upgrade your database to the current version. The **.txt** file contains the log created while executing those commands.

Click **Close** to complete the installation.

